



www.raycomfg.com



At 14,500lbs, the RH1754 can be towed behind most 1-ton pick-ups.

**RH1754
Horizontal Grinder**

Weight (dry)	14,500 lb (6,577.09 kg)
Height	115" (292.1 cm)
Length	330" (838.2 cm)
Width	90" (228.6 cm)
Engine	John Deere, 140 hp (104 kW)
Discharge Conveyor Height	104" (264.2 cm)
Infeed Conveyor Length	98" (248.9 cm)
Infeed Opening	17" x 54" (43.2 x 137.2 cm)
Fuel Capacity	80 gal (302.8 L)
Hydraulic Oil Capacity	40 gal (151.4 L)
Axle	2- 8,000 lbs(3628.7 kg) each, Torflex w/Electric Brakes



Finally... there is a horizontal grinder within reach of the small contractor. The new RAYCO RH1754 is the newest addition to RAYCO Manufacturing's line of environmental equipment. It is designed to be both compact and affordable. At 14,500 lbs, the RH1754 allows easy transportation from job to job and can be maneuvered and operated on small jobsites, inaccessible to larger machines. This unit is highly productive and capable of grinding a wide variety of wood waste materials. Ideal for processing tree limbs and brush, sawmill waste, dimensional lumber scraps, pallets, and for re-grinding wood chips. It offers an economical solution for reducing wood waste, lowering dumping costs, and creating high quality mulch.



Large radiator with removable debris screen and reversing fan.



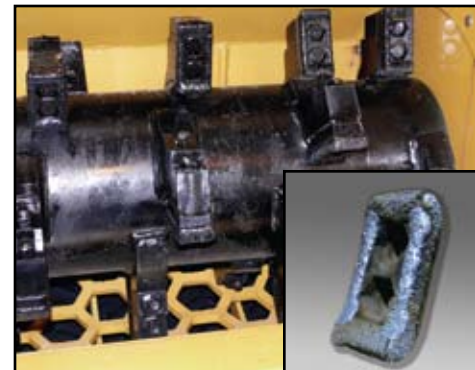
Optional torque limiter to minimize damage caused by high impacts.



Emergency shutdown button located by control station.



Radio remote control and digital instrument display



KenCoat™ - Kennametal Carbide Tooth



Swing-away fuel tank allows for easy screen changes in less than 10 minutes.



Highly productive in a wide range of applications. Features magnetic head pulley to separate nails and light metals.

Think Smart, Think Safe.....
 We care about your safety. When operating your RAYCO machinery always wear an approved helmet complete with ear muffs, face shield and the proper eyewear. Never operate under the influence of alcohol or drugs. Know your RAYCO, read and understand your owner's manual cover to cover.

800.392.2686

CALL TOLL FREE 800.392.2686
(USA or Canada Only)



RAYCO Manufacturing, Inc.
4255 E Lincoln Way
Wooster, Ohio 44691-8601 USA
Phone: 330.264.8699
Fax: 330.264.3697
raycomfg.com

*RH-401-09/11 (replaces RH-401-09/10)
Made and Printed in the USA*

Copyright © 2010 **RAYCO** Manufacturing, Inc., Wooster, OH 44691

RAYCO Manufacturing Inc. retains the right to make changes in design and specifications; engineering; add or remove features; add improvements; or discontinue manufacturing at any time without notice or obligation.